

EFFECTIVE  
JULY 1, 2020

# SOUTHERN WEST VIRGINIA COMMUNITY AND TECHNICAL COLLEGE

## Organizational Chart

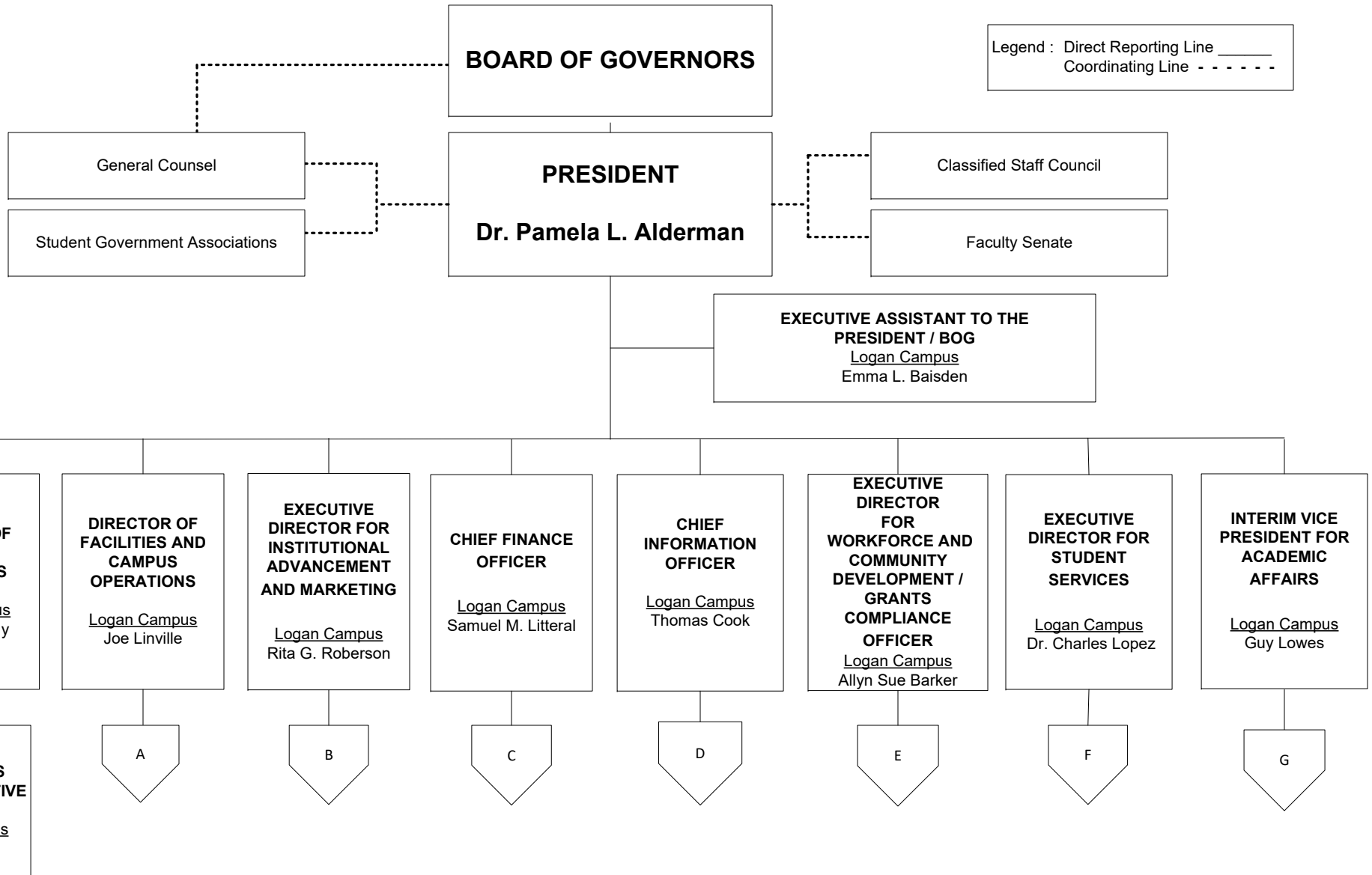
*Dr. Pamela L. Alderman*  
07/01/2020

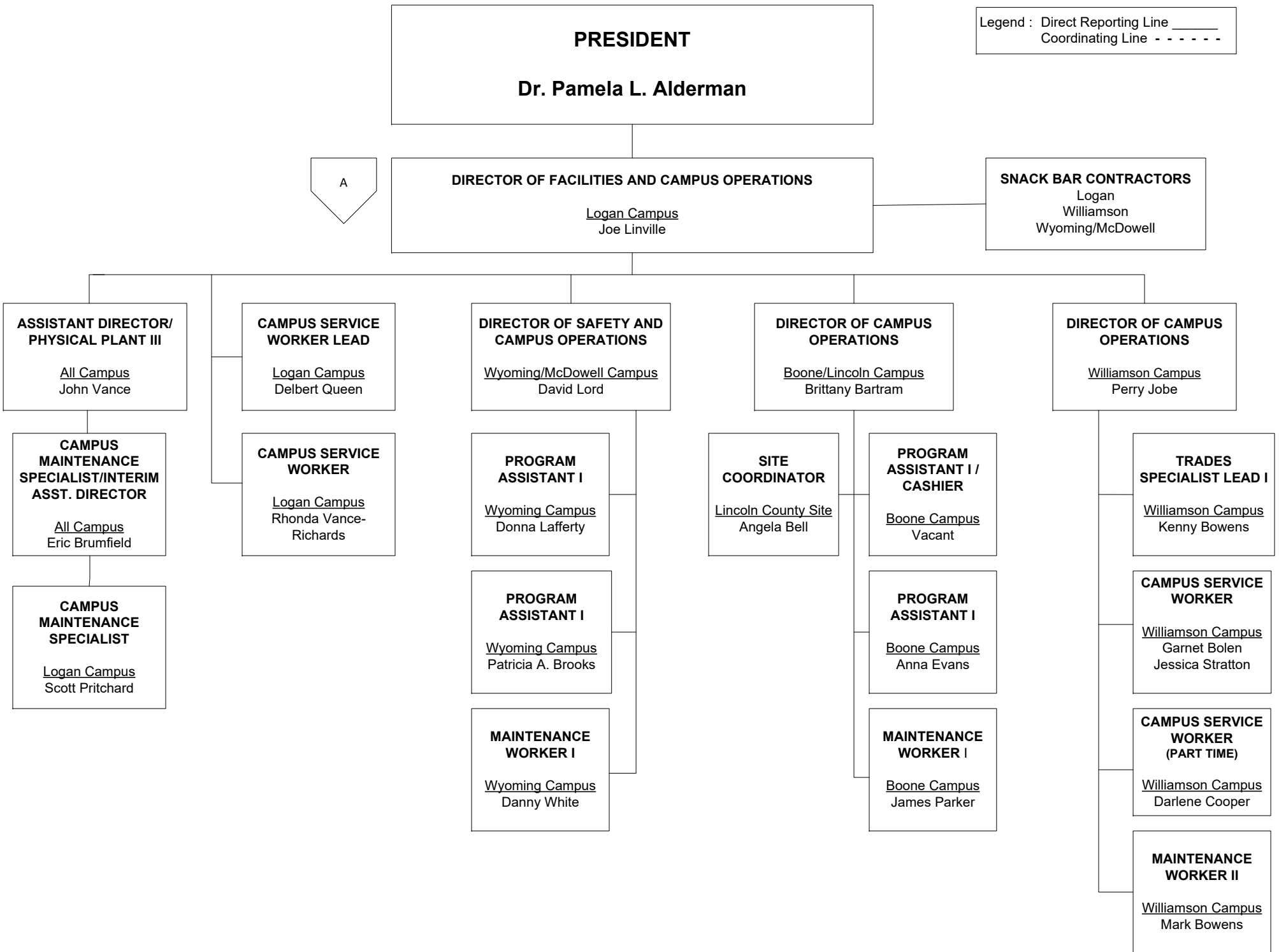
HUMAN RESOURCES DEPARTMENT

**SOUTHERN WEST VIRGINIA COMMUNITY AND TECHNICAL COLLEGE  
ORGANIZATIONAL CHART  
INDEX**

---

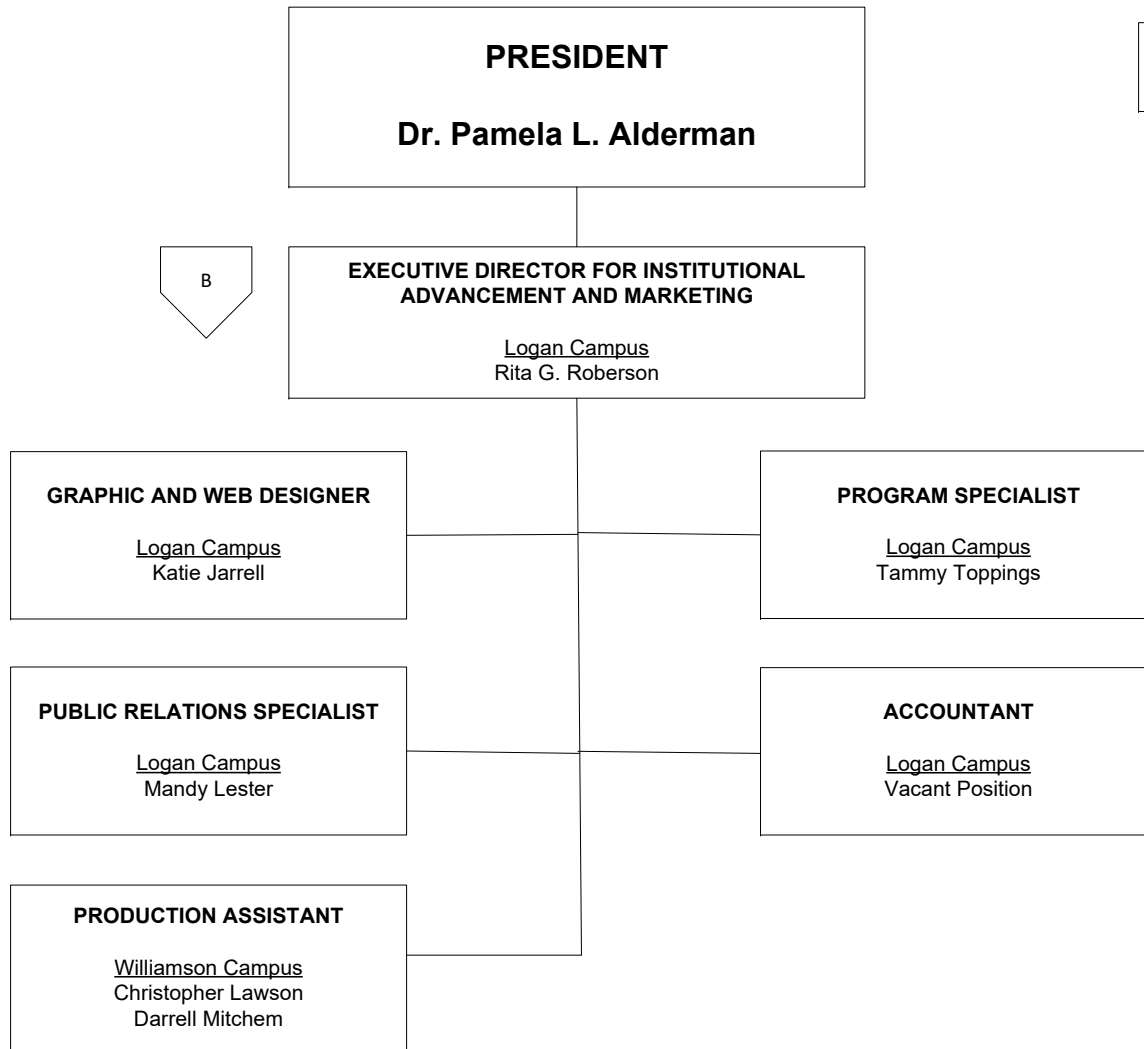
President.....	Page 1
Human Resources	
Facilities and Campus Operations.....	Page 2
Institutional Advancement and Marketing.....	Page 3
Graphic and Web Design	
Media/Television Services	
Public Relations Specialist	
Finance .....	Page 4
Business and Auxiliary Services	
Controller	
Fleet Management and Purchasing	
Information Technology Services .....	Page 5
Accreditation and Assessment	
Institutional Research	
Network and User Services	
Workforce and Community Development.....	Page 6
Academy for Mine Training and Energy Technologies	
Entrepreneurship and Business Coaching Center	
Workforce Development	
Student Services.....	Page 7
Admissions and Student Life	
Advising and Retention	
Counseling, Disability and Adult Services	
Financial Assistance	
Recruitment	
Registrar	
Academic Affairs.....	Page 8-10
Distance Education.....	Page 8
Libraries.....	Page 8
School of Arts and Sciences.....	Page 9
School of Career and Technical Studies.....	Page 10





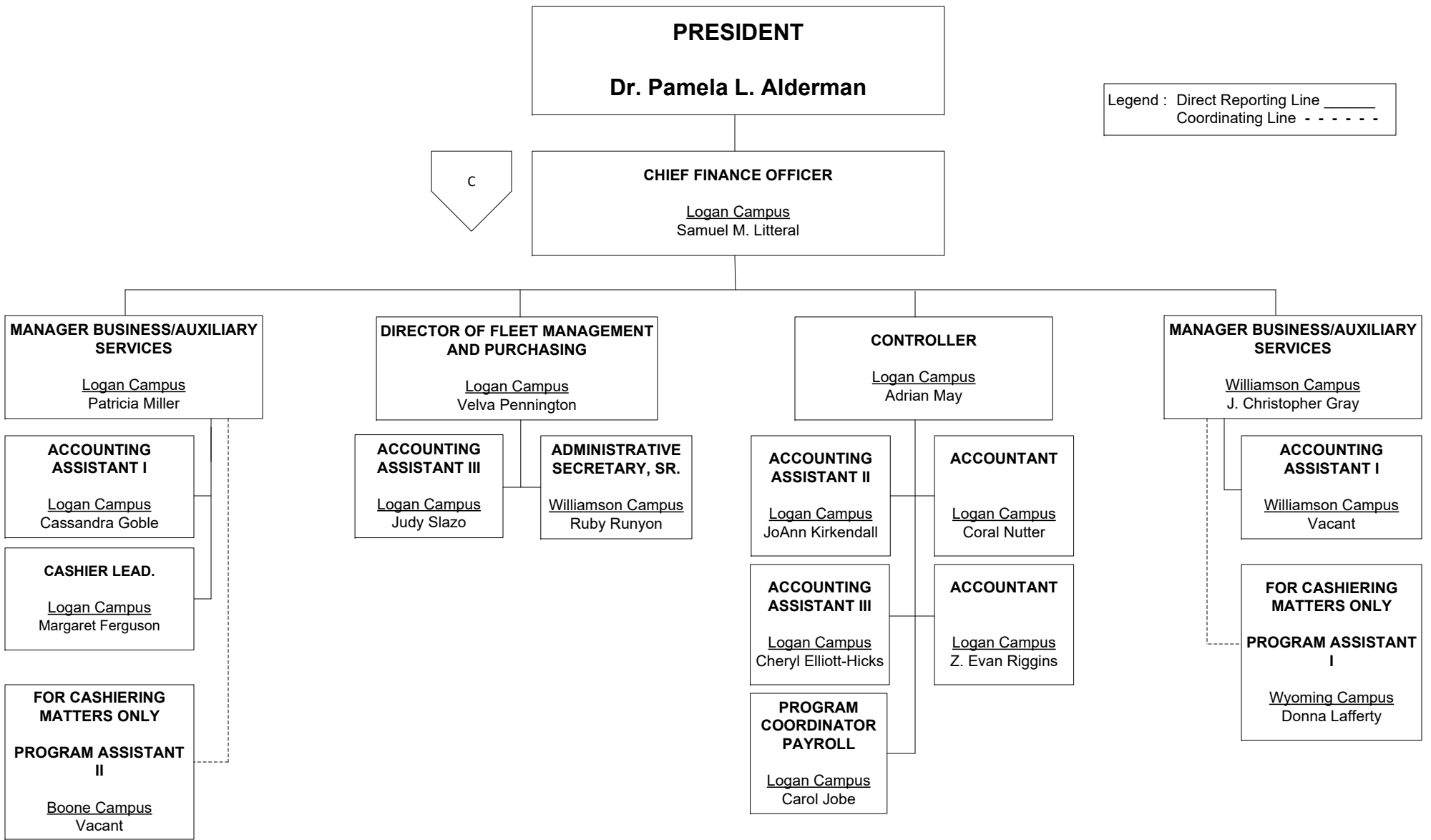
Legend : Direct Reporting Line \_\_\_\_\_  
Coordinating Line - - - - -

A



B

Legend : Direct Reporting Line \_\_\_\_\_  
Coordinating Line - - - - -



**PRESIDENT**  
**Dr. Pamela L. Alderman**

Legend : Direct Reporting Line \_\_\_\_\_  
Coordinating Line - - - - -

D

**CHIEF INFORMATION OFFICER**  
Logan Campus  
Thomas Cook

**NETWORK SERVICES  
MANAGER**  
Logan Campus  
William Smith

**DIRECTOR OF INSTITUTIONAL  
RESEARCH**  
Logan Campus  
Vacant

**DIRECTOR OF  
ACCREDITATION AND  
ASSESSMENT**  
Logan Campus  
Vacant

**USER SERVICES MANAGER**  
Logan Campus  
Curtis Campbell

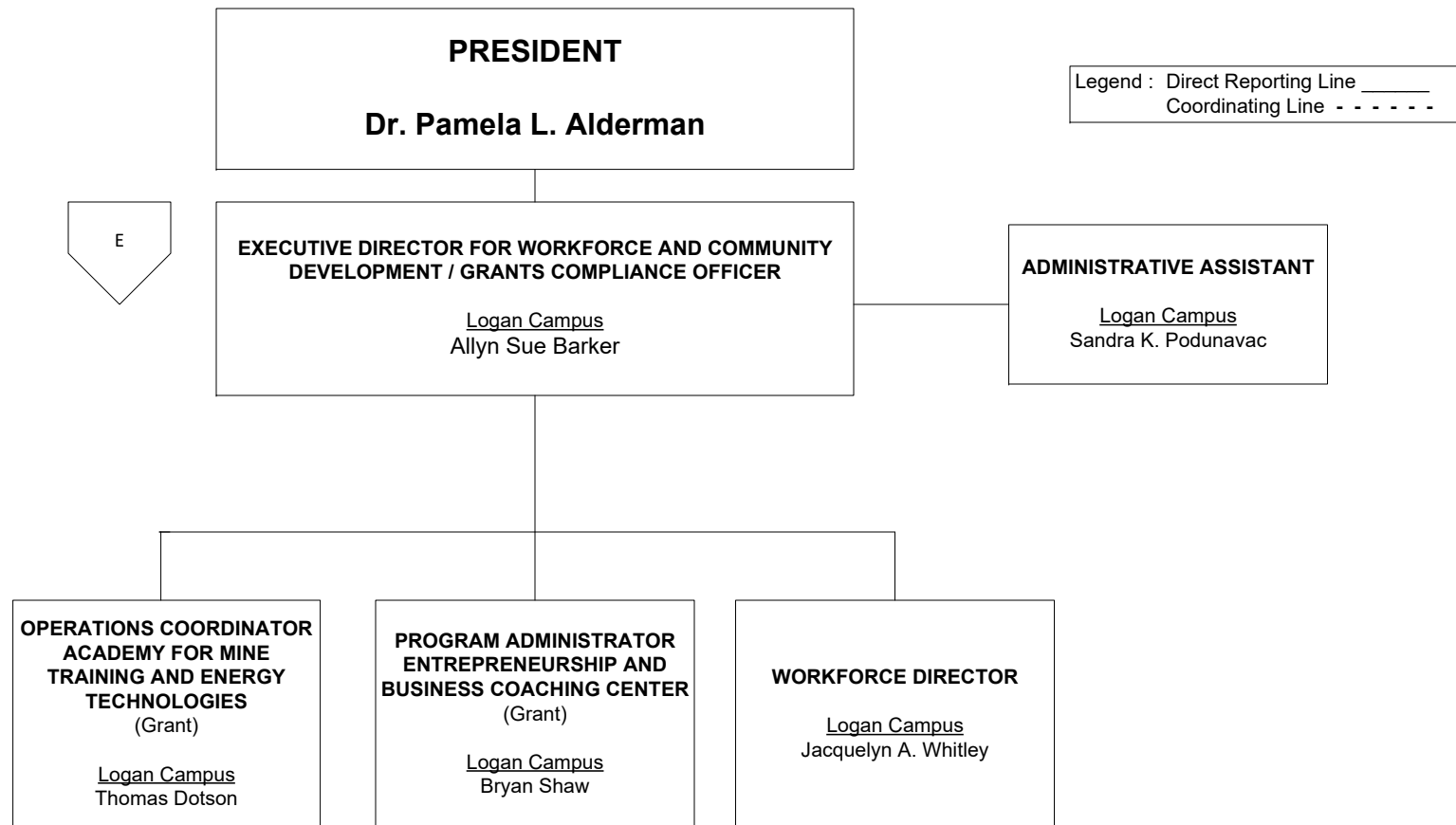
**APPLICATION  
PROGRAMMER/DEVELOPER**  
Logan Campus  
Brian Chaney

**TELECOMMUNICATIONS  
NETWORK SPECIALIST II**  
Logan Campus  
Willard (Mac) Thompson

**ACCREDITATION LIAISON  
OFFICER**  
Logan Campus  
William 'Bill' Alderman

**INFORMATION SYSTEMS  
TECHNICIAN**  
Logan Campus  
Lee Stroud  
J. Brandon Vance  
Vickie Workman  
Wyoming Campus  
Michael Hunter

**DATA NETWORK SPECIALIST**  
Logan Campus  
Joseph Justice





**PRESIDENT**  
**Dr. Pamela L. Alderman**

Legend : Direct Reporting Line \_\_\_\_\_  
 Coordinating Line - - - - -

**EXECUTIVE DIRECTOR FOR STUDENT SERVICES**  
Logan Campus  
 Dr. Charles Lopez

**STUDENT GOVERNMENT ASSOCIATIONS**  
 Logan  
 Williamson  
 Boone/Lincoln  
 Wyoming/McDowell

F

**ADMINISTRATIVE ASSISTANT**  
Logan Campus  
 Lisa Britton

**DIRECTOR OF DISABILITY AND ADULT SERVICES**  
Logan Campus  
 Dianna Toler

**DIRECTOR OF ADMISSIONS AND STUDENT LIFE**  
Logan Campus  
 Darrell Taylor

**DIRECTOR OF ADVISING AND RETENTION**  
Logan Campus  
 Tim Ooten

**DIRECTOR OF FINANCIAL ASSISTANCE**  
Logan Campus  
 Stella Estepp

**REGISTRAR**  
Logan Campus  
 Teri Wells

**ACADEMIC ADVISOR**  
Boone Campus  
 Lisa Light

**ACADEMIC ADVISORS**  
Williamson Campus  
 Rhonda Collins  
 Leah Marcum (GEARUP Grant)  
 Roger Williamson  
 Cynthia Workman (TANF Grant)  
Wyoming Campus  
 Katrina Matney

**ACADEMIC ADVISORS**  
Logan Campus  
 Brian Carter  
 Hattie Newsome (TANF Grant)  
 Kara Plummer (GEARUP Grant)

**FINANCIAL AID COUNSELOR**  
Logan Campus  
 Beverly McDonald  
 Mary Trent  
Williamson Campus  
 Janice Bowens

**PROGRAM ASSISTANT I**  
Logan Campus  
 Shelly Parker

**STUDENT RECORDS ASSISTANT**  
Williamson Campus  
 Paula Maynard

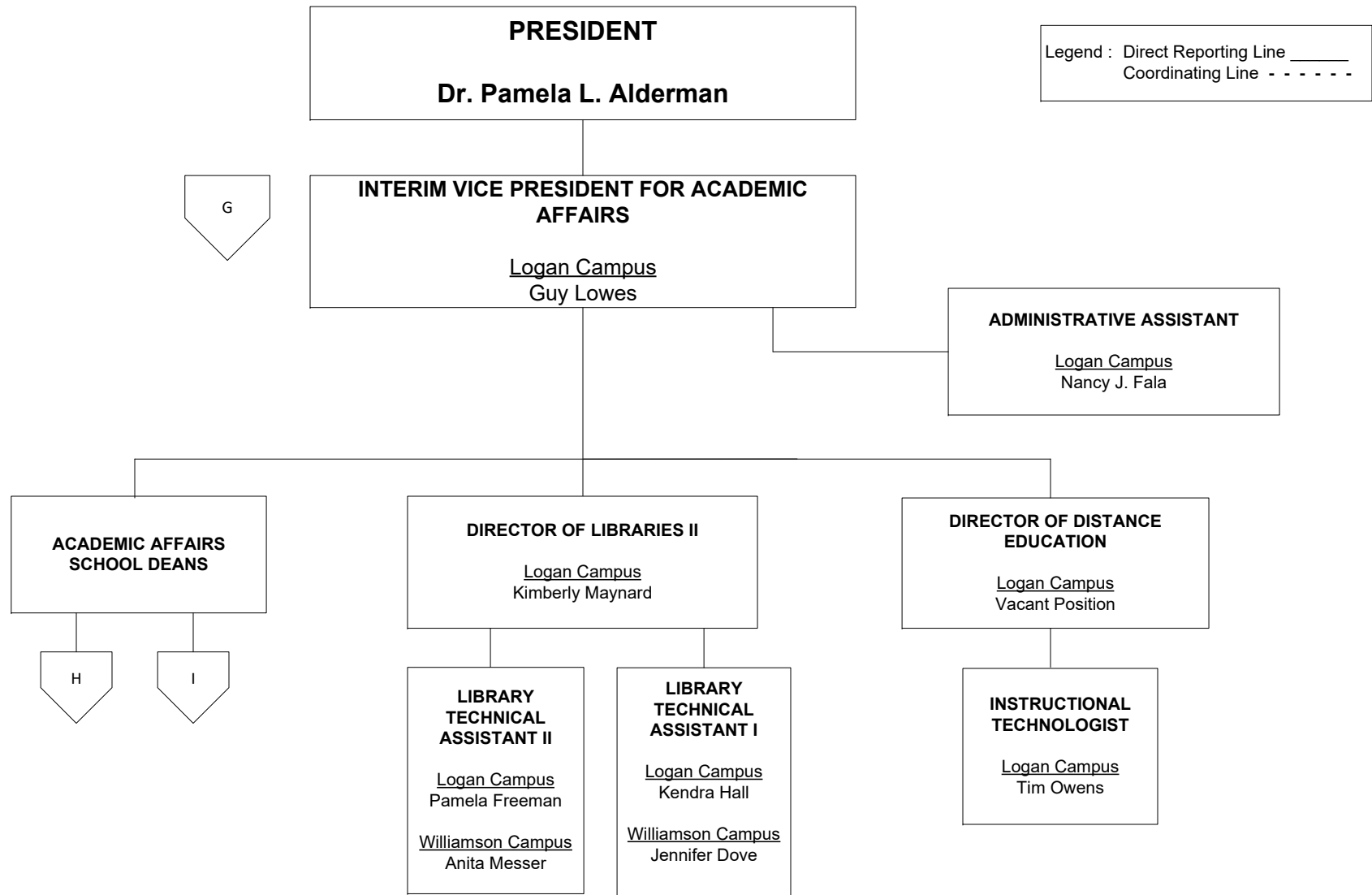
**RECRUITMENT AND OUTREACH SPECIALIST**  
Logan Campus  
 Shelby Porter

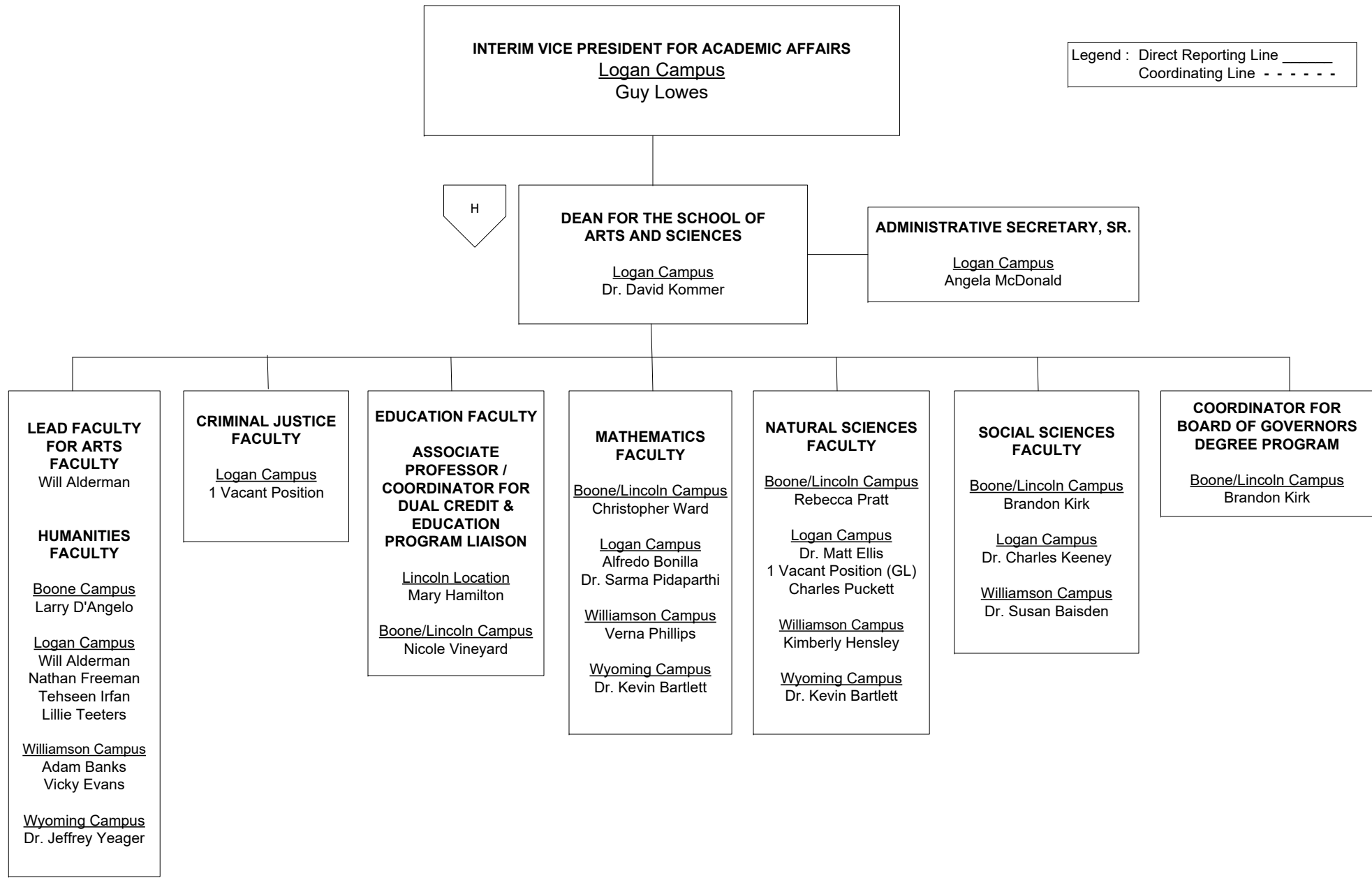
**STUDENT SUCCESS COORDINATOR**  
Logan Campus  
 Vacant

**Three Part-time Tutors**

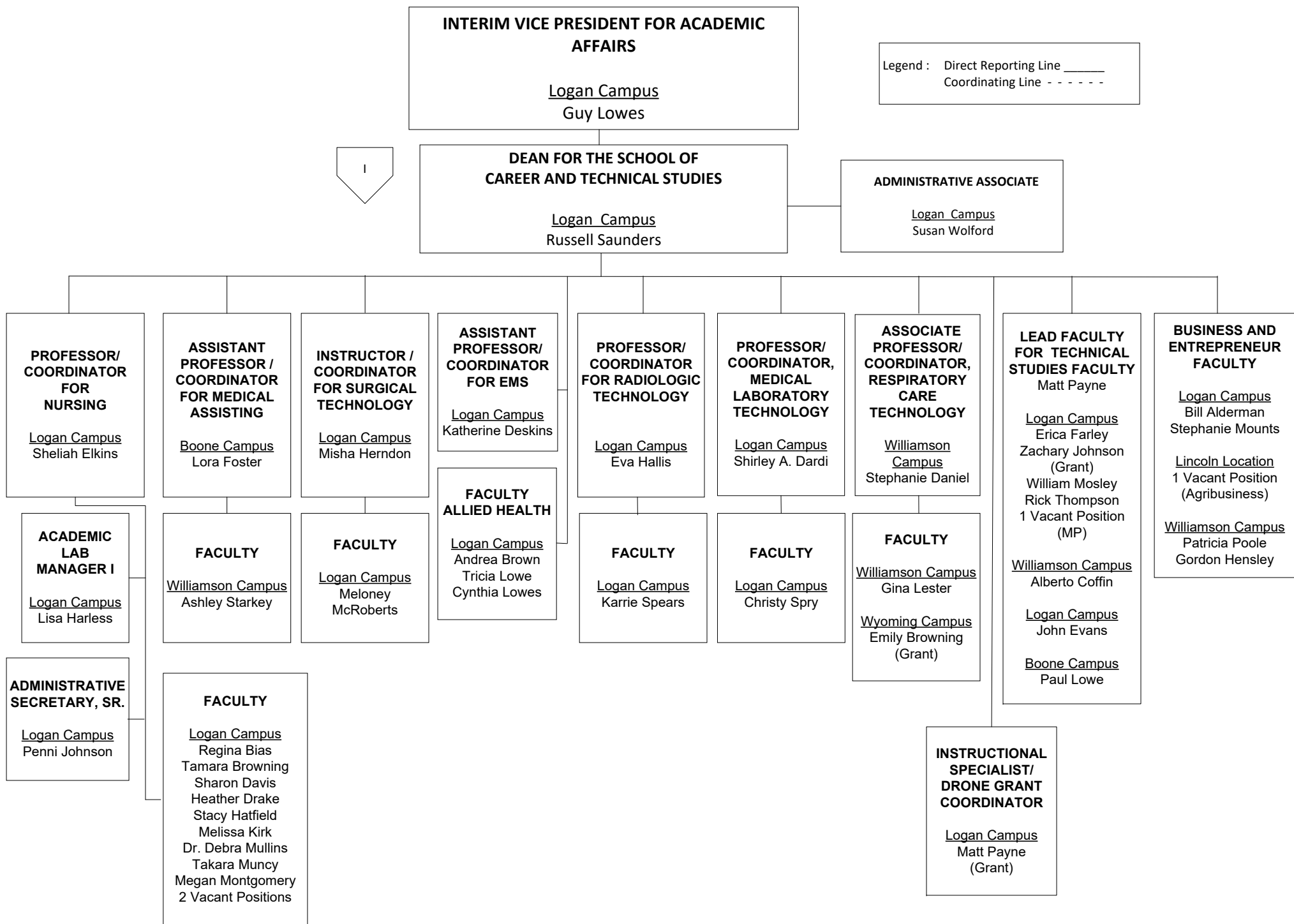
**TRANSFER COORDINATOR**  
Logan Campus  
 Angela Dotson

**FOR STUDENT RECORDS MATTERS ONLY**  
Boone Campus  
 Anna Evans  
Wyoming Campus  
 Patricia Brooks





Legend : Direct Reporting Line \_\_\_\_\_  
Coordinating Line - - - - -



Legend : Direct Reporting Line \_\_\_\_\_  
Coordinating Line - - - - -