

**EFFECTIVE  
8/14/2023**

**SOUTHERN WEST VIRGINIA  
COMMUNITY AND TECHNICAL COLLEGE**

**Organizational Chart**

*Dr. Pamela L. Alderman*

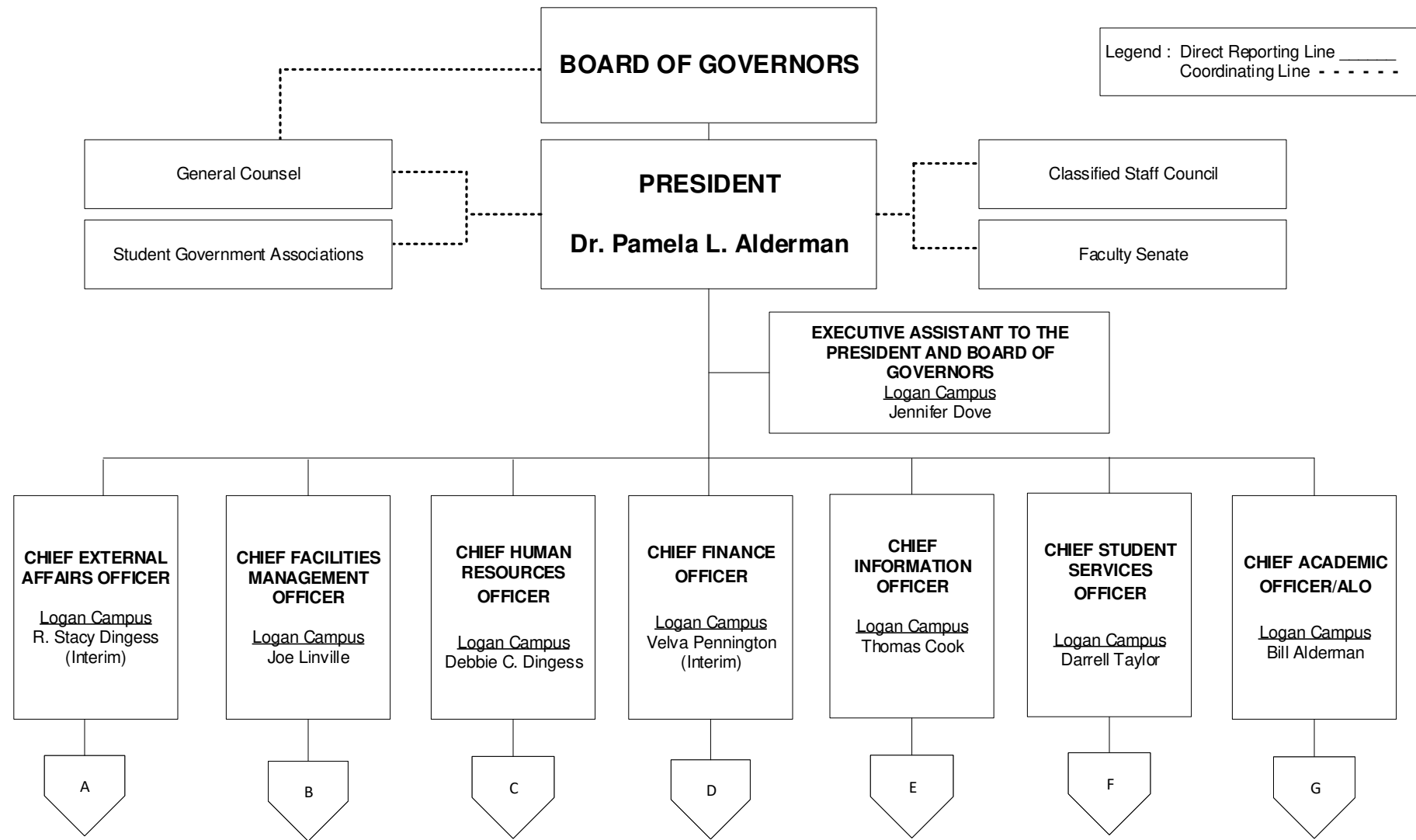
08/17/2023



**SOUTHERN WEST VIRGINIA COMMUNITY AND TECHNICAL COLLEGE  
ORGANIZATIONAL CHART**

**INDEX**

President.....	Page 1
President's Cabinet	
Development.....	Page 2
Communications	
Community Relations	
Development	
Facilities .....	Page 3
Human Resources.....	Page 4
Business Services .....	Page 5
Controller	
Budgets and Purchasing	
Office of Information Technology .....	Page 6
Applications Programming/Development	
Distance Education	
Web Development	
Institutional Research	
Network Services	
User Services	
Student Services.....	Page 7-8
Admissions.....	Page 7
Financial Assistance.....	Page 7
Registrar.....	Page 7
Student Success.....	Page 7
Workforce Development.....	Page 8
Academic Affairs/ALO.....	Page 9-11
Accreditation and Assessment.....	Page 9
Library Services.....	Page 9
Professional and Transfer Programs.....	Page 10
Allied Health and Nursing .....	Page 11



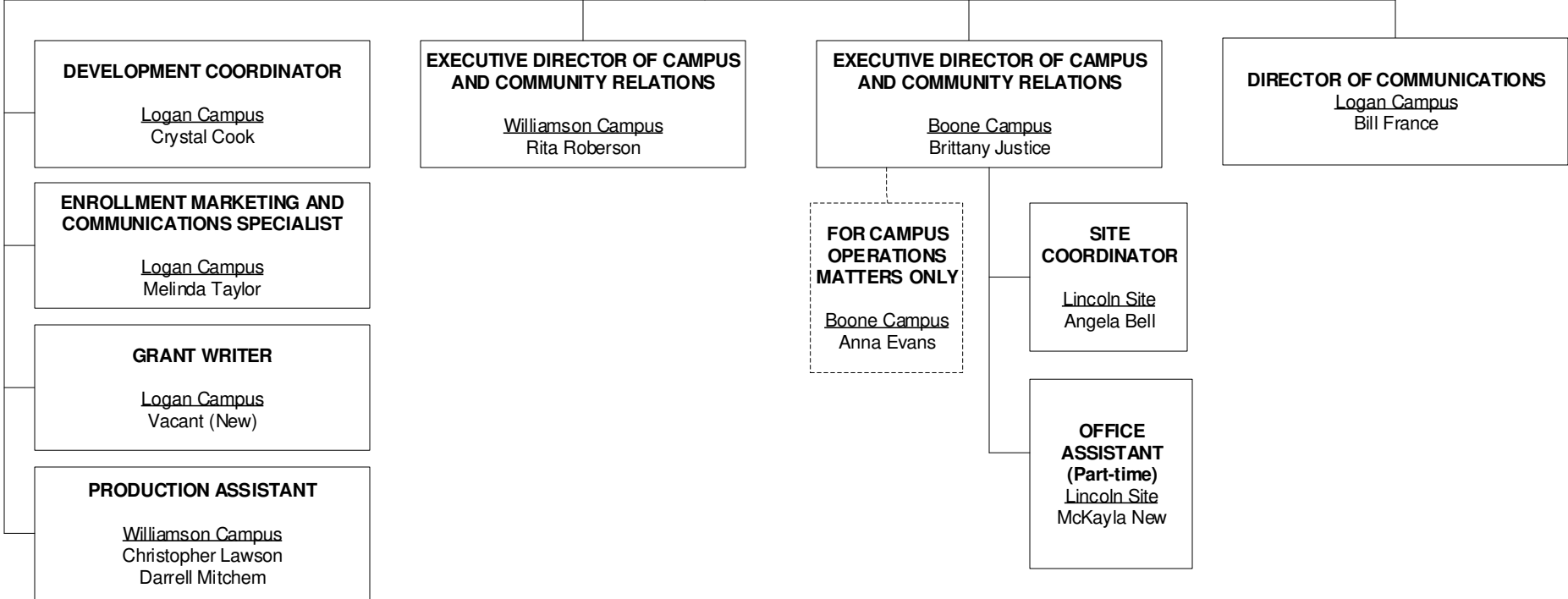
Legend : Direct Reporting Line \_\_\_\_\_  
 Coordinating Line - - - - -

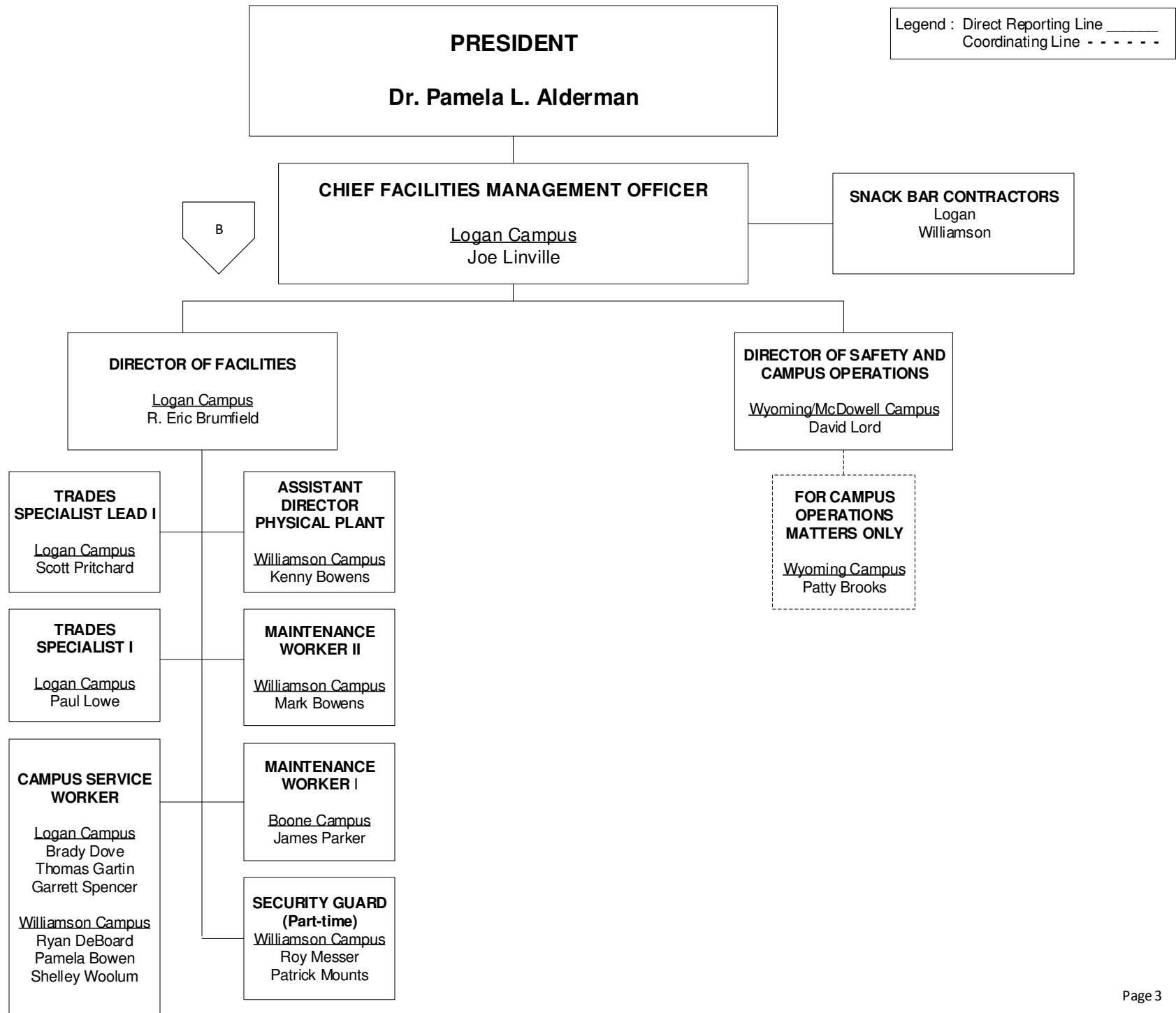
**PRESIDENT**  
**Dr. Pamela L. Alderman**

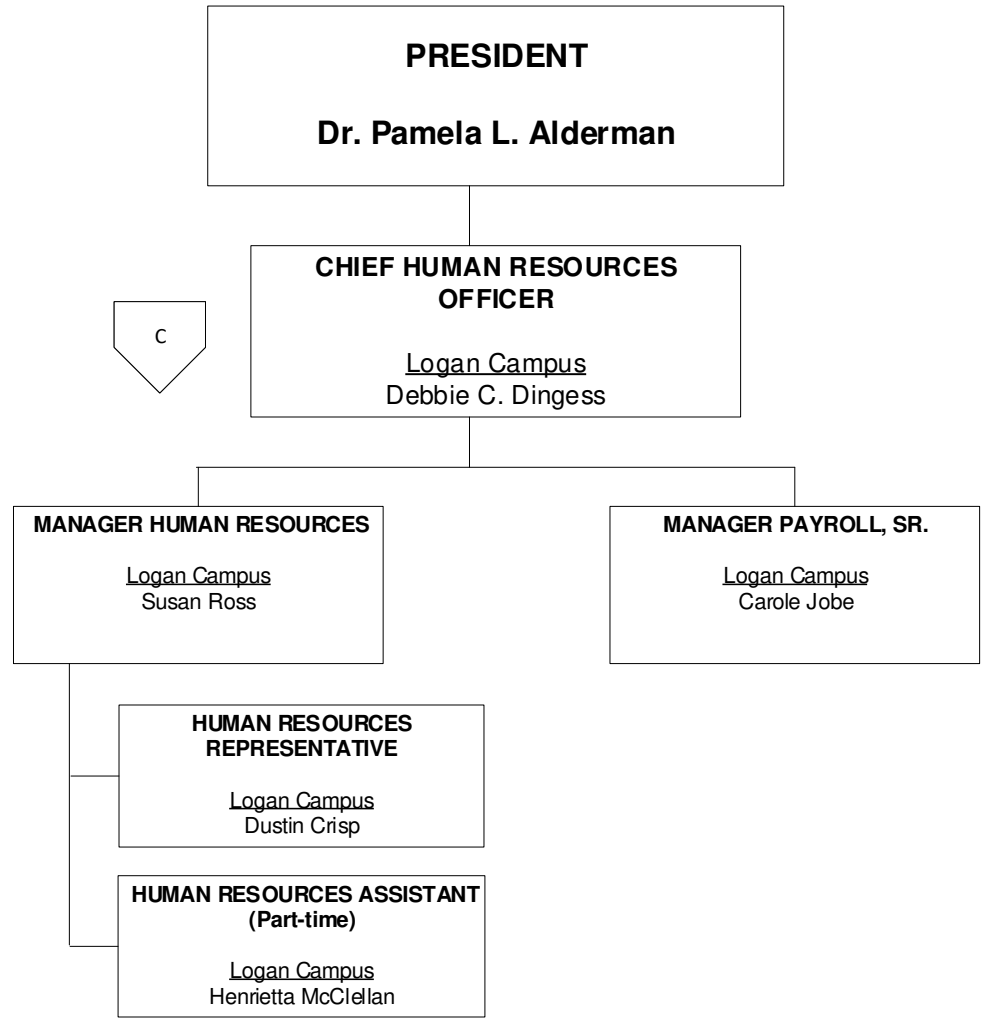
A

**CHIEF EXTERNAL AFFAIRS OFFICER**  
Logan Campus  
 R. Stacy Dingess  
 (Interim)

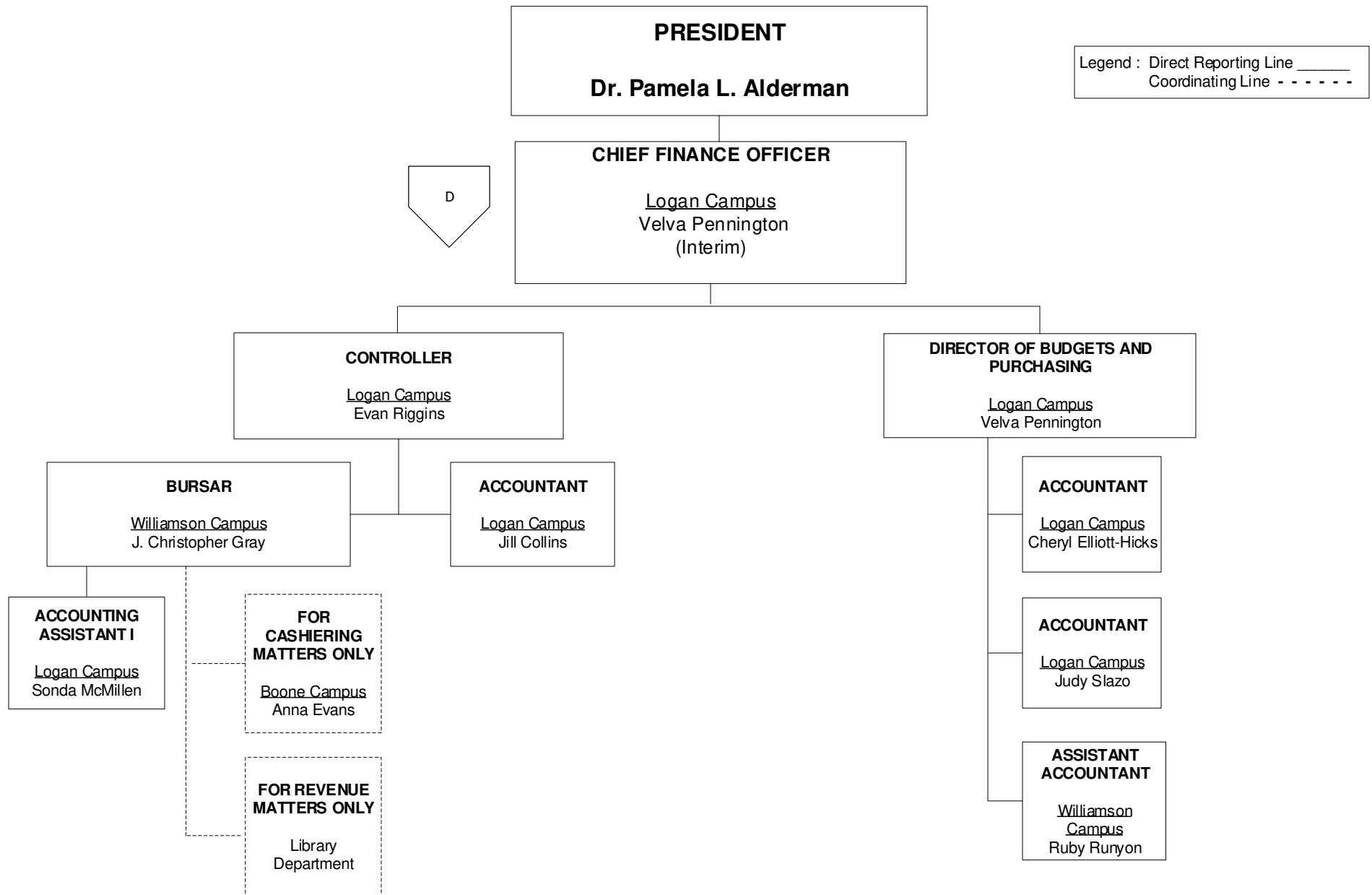
**EXECUTIVE ASSISTANT TO THE  
 CHIEF EXTERNAL AFFAIRS OFFICER**  
Logan Campus  
 Tammy Toppings







Legend : Direct Reporting Line \_\_\_\_\_  
 Coordinating Line - - - - -



**PRESIDENT**  
**Dr. Pamela L. Alderman**

Legend : Direct Reporting Line \_\_\_\_\_  
Coordinating Line - - - - -

E

**CHIEF INFORMATION OFFICER**  
Logan Campus  
Thomas Cook

**EXECUTIVE ASSISTANT TO THE CHIEF INFORMATION OFFICER**  
Logan Campus  
Angela McDonald

**DIRECTOR OF NETWORK SERVICES**  
Logan Campus  
Joseph Justice

**DIRECTOR OF INSTITUTIONAL RESEARCH**  
Logan Campus  
Vacant

**DIRECTOR OF DISTANCE EDUCATION**  
Williamson Campus  
Tim Owens

**DIRECTOR OF USER SERVICES**  
Logan Campus  
Curtis Campbell

**TELECOMMUNICATIONS NETWORK SPECIALIST II**  
Logan Campus  
Andrew Portzer

**APPLICATIONS PROGRAMMER/ DEVELOPER LEAD**  
Logan Campus  
Brian Chaney

**WEB DEVELOPER**  
Logan Campus  
Christopher Thompson

**APPLICATIONS PROGRAMMER**  
Logan Campus  
Mark Justice

**INFORMATION SYSTEMS TECHNICIAN**  
Logan Campus  
Lee Stroud  
J. Brandon Vance  
Vicki Workman  
Wyoming Campus  
Michael Hunter  
Williamson Campus  
Matthew Hatfield



**PRESIDENT**  
**Dr. Pamela L. Alderman**

Legend : Direct Reporting Line \_\_\_\_\_  
Coordinating Line - - - - -

F

**CHIEF STUDENT SERVICES OFFICER**  
Logan Campus  
Darrell Taylor

STUDENT GOVERNMENT ASSOCIATIONS

**EXECUTIVE ASSISTANT TO THE CHIEF STUDENT SERVICES OFFICER**  
Logan Campus  
Shelly Parker

**DIRECTOR OF STUDENT SUCCESS**  
Logan Campus  
Dianna Toler

**DIRECTOR OF ADMISSIONS**  
Logan Campus  
Tim Ooten

**REGISTRAR**  
Logan Campus  
Teri Wells

**DIRECTOR OF FINANCIAL ASSISTANCE**  
Logan Campus  
Stella Estep

**STUDENT SUCCESS ADVISOR**

Boone Campus  
Elijah Hooker

Logan Campus  
Brian Carter  
Michele Moore  
(TANF Grant)

Williamson Campus  
Rhonda Collins  
Roger Williamson  
Vacant  
(TANF Grant)

Wyoming Campus  
Cassandra Vance

**FOR STUDENT SUCCESS MATTERS ONLY**

Lincoln Site  
Angela Bell

**STUDENT SUCCESS CENTER COORDINATOR**

Logan Campus  
Hattie Newsome

**CAREER SERVICES COUNSELOR**

Logan Campus  
Vacant  
(Perkins Grant)

**PROGRAM ASSISTANT I**

Logan Campus  
Brittany Fekete

**RECRUITMENT AND OUTREACH SPECIALIST**

Logan Campus  
Mike Collins

**STUDENT COMMUNICATIONS SPECIALIST**

Williamson Campus  
Shelly Stewart

**PROJECT COORDINATOR (Part-time)**

Logan Campus  
Kelsey Lemmon

**FOR ADMISSIONS AND/OR STUDENT RECORDS MATTERS ONLY**

Lincoln Site  
Angela Bell

**FOR ADMISSIONS MATTERS ONLY**

Boone Campus  
Anna Evans

Wyoming Campus  
Patty Brooks

**STUDENT RECORDS ASSISTANT**

Williamson Campus  
Paula Maynard

**TRANSFER COORDINATOR**

Logan Campus  
Angela Dotson

**PROGRAM ASSISTANT I**

Boone Campus  
Anna Evans

Wyoming Campus  
Patty Brooks

**ASSOCIATE DIRECTOR OF FINANCIAL AID**

Logan Campus  
Mary Trent

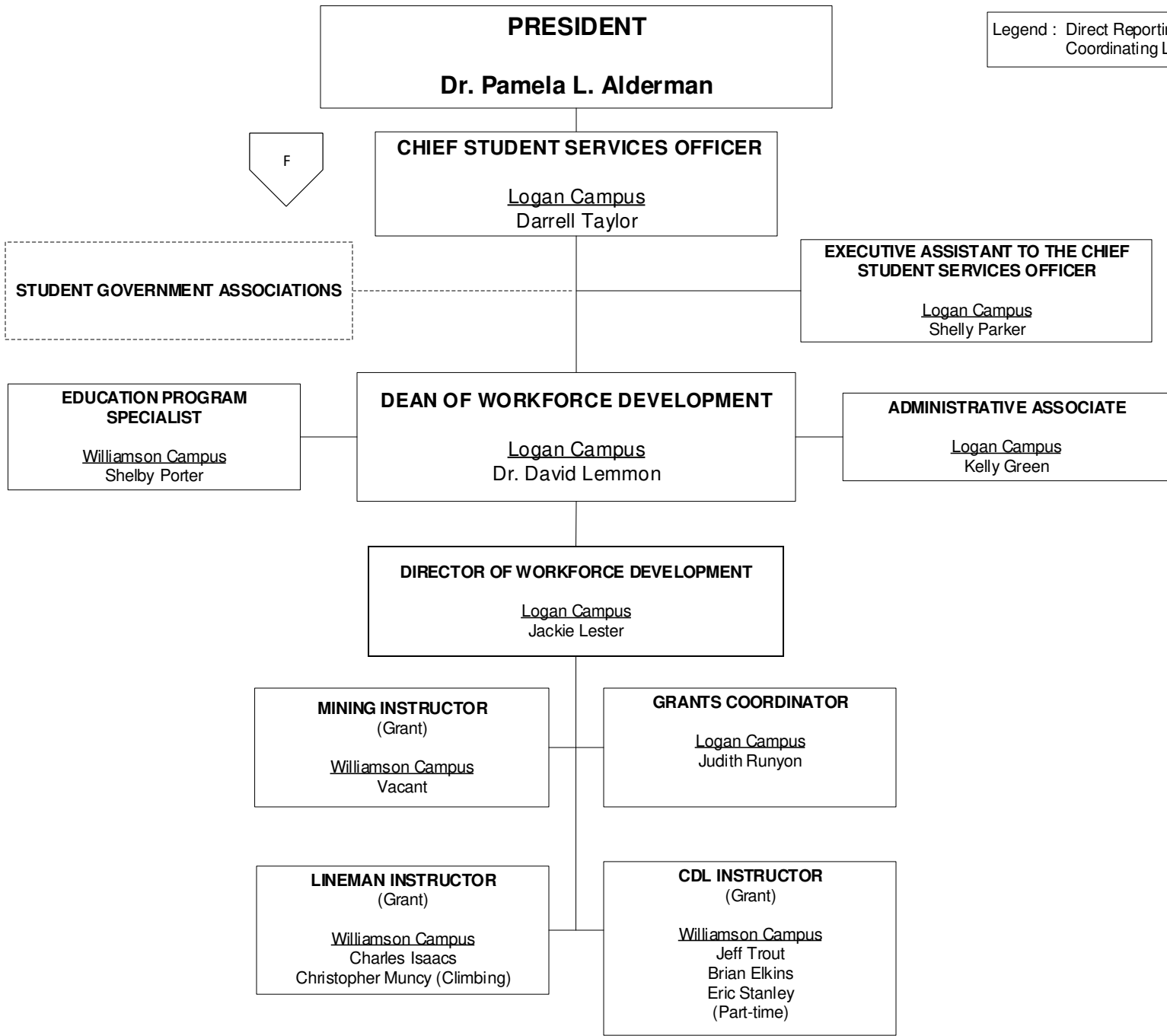
**FINANCIAL AID COUNSELOR**

Logan Campus  
Beverly McDonald

Williamson Campus  
Kelly Jacobs

**FINANCIAL AID ASSISTANT (Part-time)**

Logan Campus  
Vacant



Legend : Direct Reporting Line \_\_\_\_\_  
Coordinating Line - - - - -

Legend : Direct Reporting Line \_\_\_\_\_  
 Coordinating Line - - - - -

**PRESIDENT**  
**Dr. Pamela L. Alderman**

G

**CHIEF ACADEMIC OFFICER/  
 ACCREDITATION LIAISON OFFICER**  
Logan Campus  
 Bill Alderman

**EXECUTIVE ASSISTANT TO THE  
 CHIEF ACADEMIC OFFICER**  
Logan Campus  
 Sandra Podunavac

**DIRECTOR OF LIBRARIES II**  
Logan Campus  
 Kimberly Maynard

**DIRECTOR OF ACCREDITATION AND  
 ASSESSMENT**  
Logan Campus  
 Regina Bias

**DEAN OF PROFESSIONAL AND  
 TRANSFER PROGRAMS**  
Logan Campus  
 Dr. Michael Jiles

**DEAN OF ALLIED HEALTH  
 AND NURSING**  
Logan Campus  
 Dr. Lisa Haddox-Heston

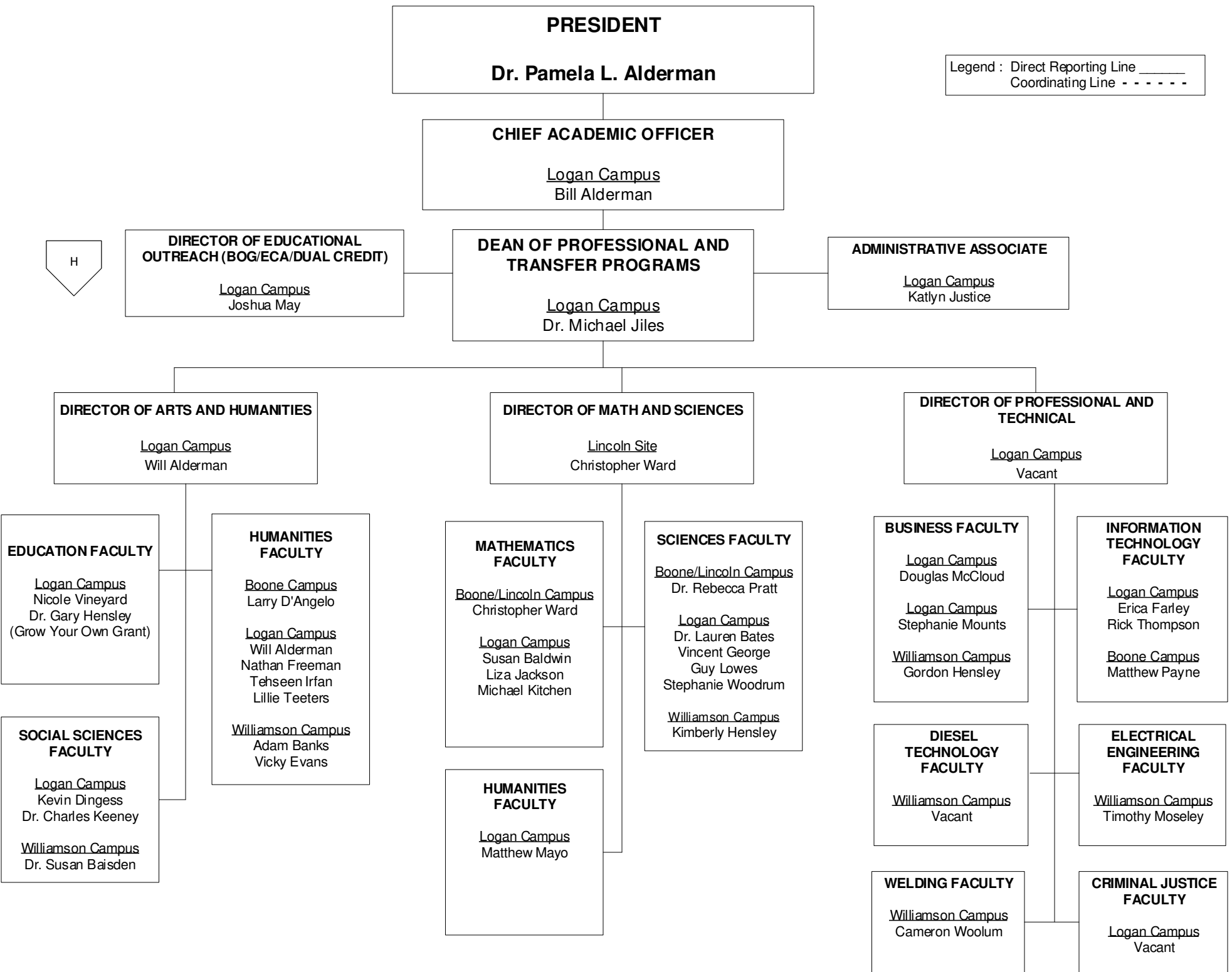
**LIBRARY  
 TECHNICAL  
 ASSISTANT II**  
Logan Campus  
 Cassandra Goble  
Williamson Campus  
 Anita Messer

**LIBRARY  
 TECHNICAL  
 ASSISTANT I**  
Logan Campus  
 Vacant  
Williamson Campus  
 Tara Drake

**LIBRARY CLERK  
 (Part-time)**  
Logan Campus  
 Drema Frye

H

I



Legend : Direct Reporting Line \_\_\_\_\_  
Coordinating Line - - - - -

